



Burn Scar Debris Flow Community Meeting





Agenda

- Opening remarks from Supervisor Moreno
- What is a burn scar?
- What is a debris flow?
- How will officials determine if there is a risk?
- How will I be notified?
- What can I do to prepare myself?
- Questions?



Introduction from Supervisor Moreno



What is a Burn Scar?

A recent wildfire creates an increased risk of flooding for years to come, particularly in the first two years after the wildfire.

Rainfall that would normally be absorbed will run off extremely quickly after a wildfire, as burned soil can be as water-repellant as pavement.

Locations downhill and downstream from burned areas are very susceptible to flash flooding and debris flows, especially near steep terrain.



What is a Debris Flow?

Debris flows are fast-moving, damaging and potentially deadly landslides. They are powerful mixtures of mud, rocks, boulders, entire trees - and sometimes, homes or vehicles.

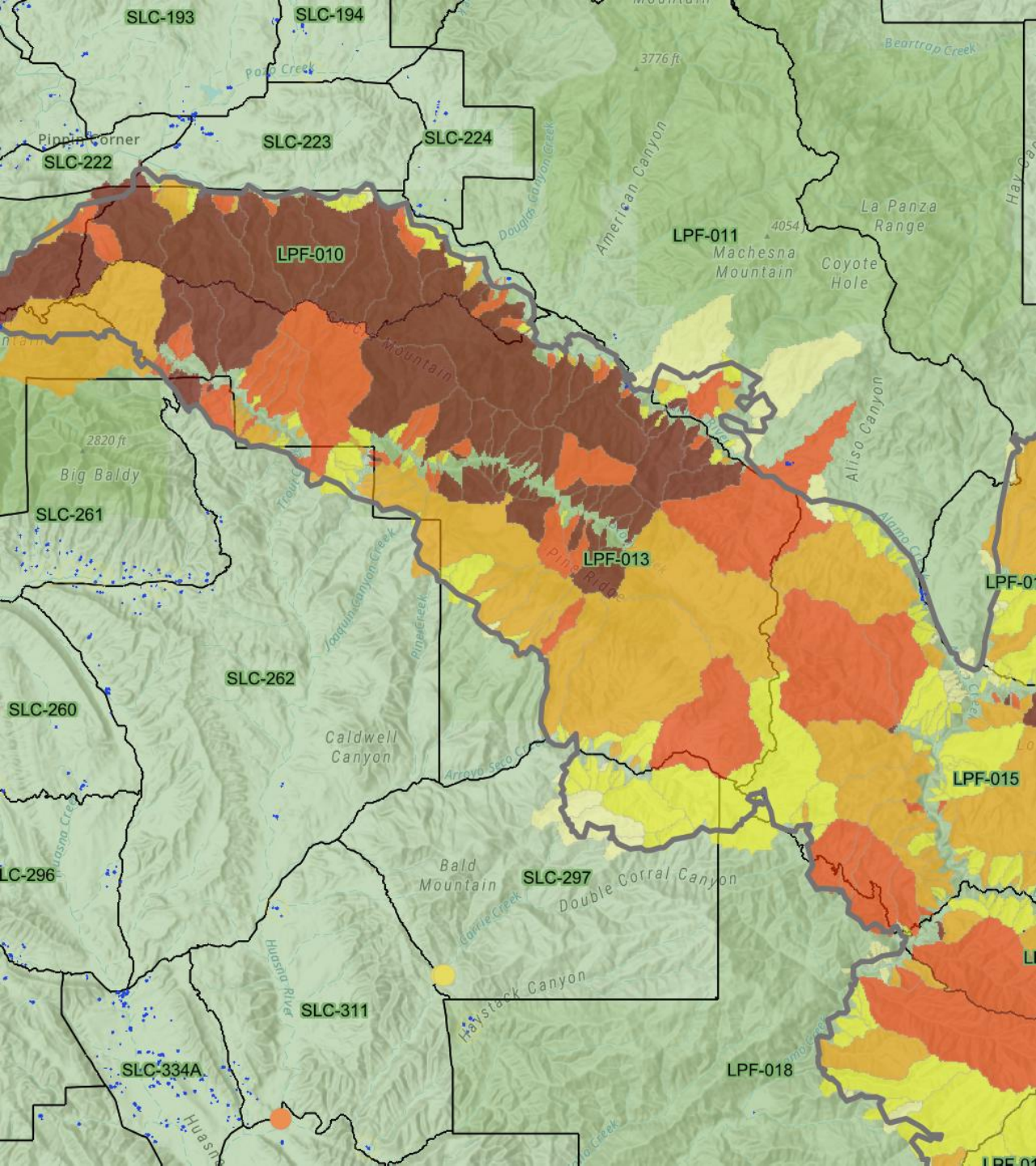


How do we determine who is at risk?

State and Federal experts evaluate the burn scar to determine debris flow thresholds and likelihood.

They identified Values at Risk (VARs), which are values or resources at risk of damage or loss by post-wildfire geologic and/or hydrologic hazards for the burn scars.

County officials also worked with the team to identify Secondary VARs, which are areas outside of the burn scar that are also at risk for debris flow.

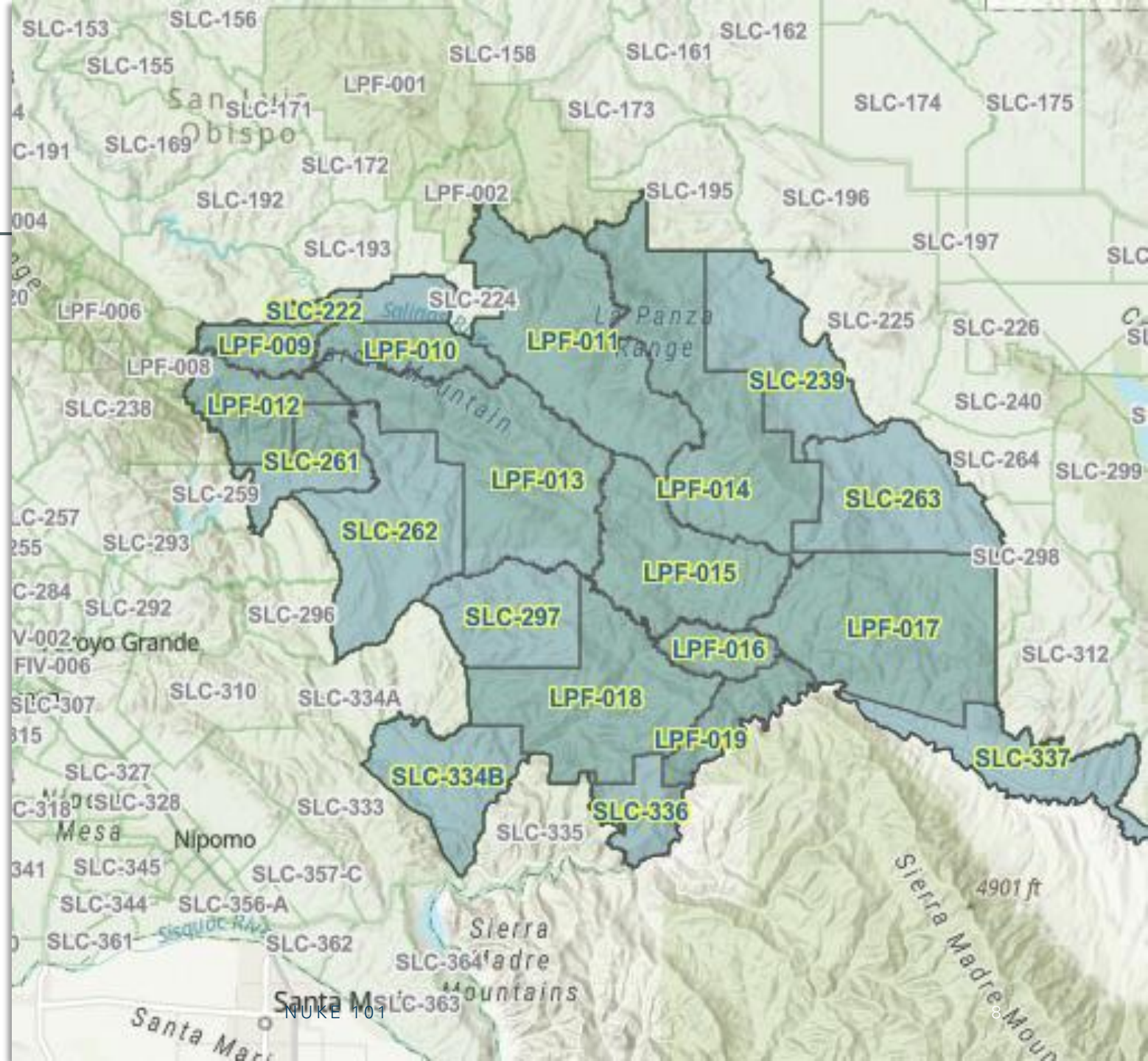


Debris Flow Modeling

- Internal debris flow modeling used by emergency officials to identify potential impacts.
- Incorporates rainfall quantity, soil makeup, and slope.
- Estimates only; will be referenced as forecasts are made/change.
- Analysis completed by watershed and outflow direction.

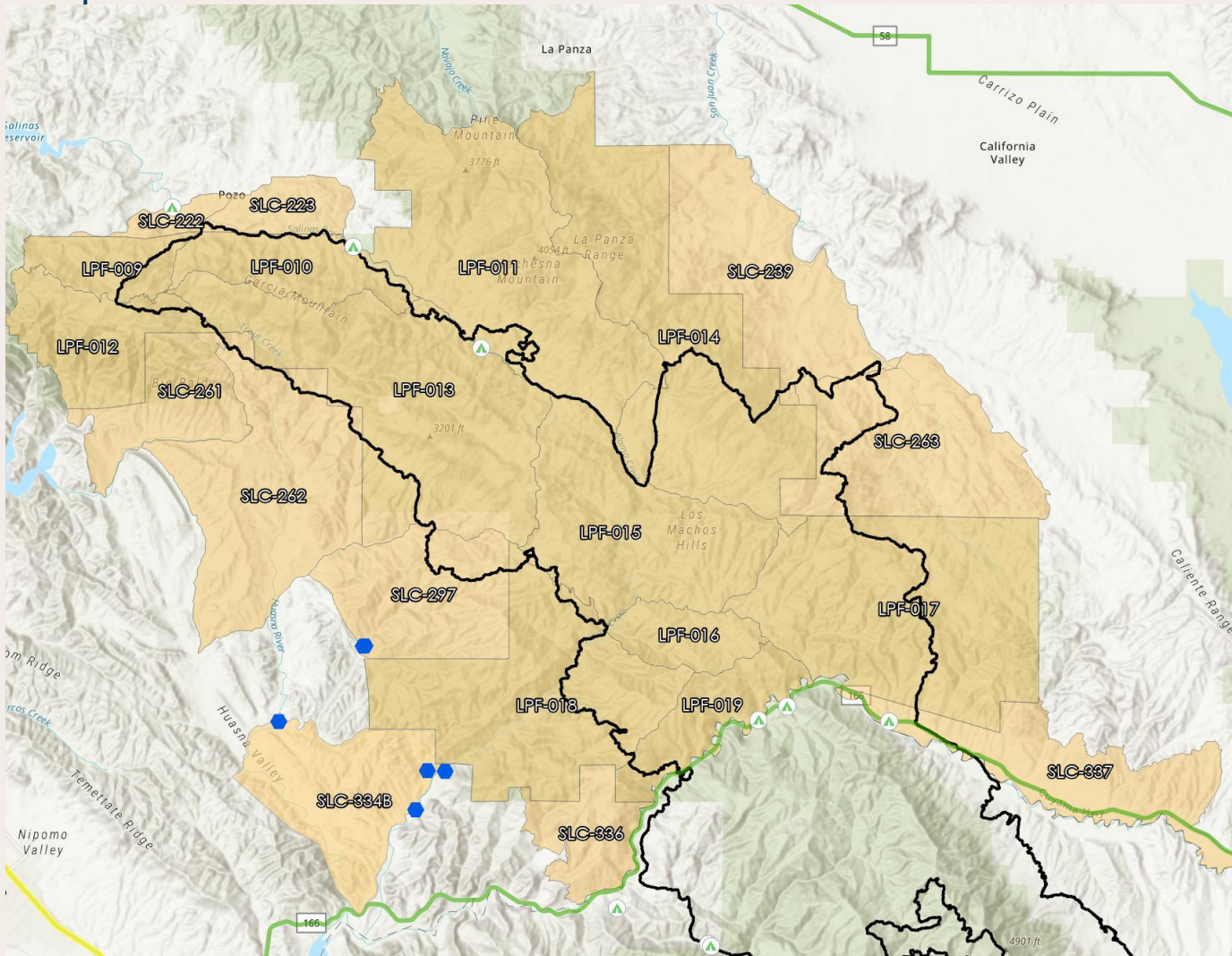
Gifford Debris Flow Area

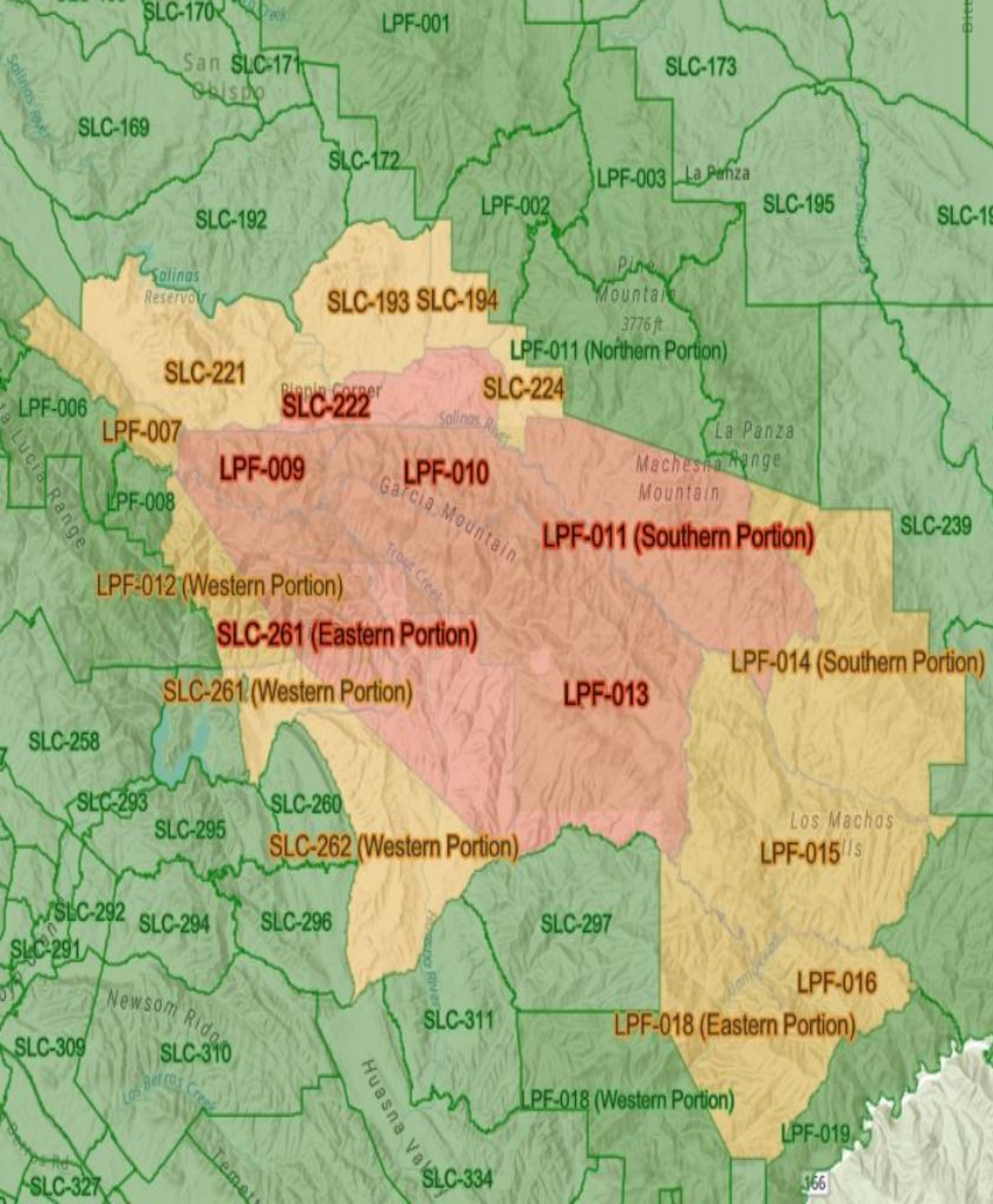
- The County uses pre-established evacuation zones that can be used during large scale emergencies.
- Designed to hasten response time for officials and the public.
- Due to the nature of the burn scar and debris flow, any protective action decisions made will be for all the zones in the area called the "Gifford Debris Flow Area"



Evacuation Zones in the Gifford Debris Flow Area

- LPF-009
 - LPF-010
 - LPF-011
 - LPF-012
 - LPF-013
 - LPF-014
 - LPF-015
 - LPF-016
 - LPF-017
 - LPF-018
 - LPF-019
 - SLC-222
 - SLC-223
 - SLC-239
 - SLC-261
 - SLC-262
 - SLC-263
 - SLC-297
 - SLC-334B
 - SLC-336
 - SLC-337
- Find your Evac Zone AND if you are within the Debris Flow Area at:
ReadySLO.org/BurnScarStatus





Understanding Terminology

Shelter in Place: Stay inside your location until officials tell you it is safe to leave.

Evacuation Warning: Potential threat to life and/or property. Those who require additional time to evacuate should leave now.

Evacuation Order: Immediate threat to life; a lawful order issued to leave now.

Emergency Alert

Los Padres NF has issued an EVACUATION ORDER for zones: LPF 016,017,019, SLC337- North of Hwy 166, east of Cable Co Rd, south of Tajea Flats Rd, of Chimineas Rd. For more information go to readyslo.com

Gifford Fire - Highway 166.

Protective Actions

Made for entire "Gifford Debris Flow Area" and not for individual evacuation zones.

Only made in the event of severe or life-threatening forecasts or events. **Will not be made with every large storm.**

If a large storm is forecast, public messaging will occur.





How Can You Prepare Yourself in Advance?

- You know your property better than anyone. Identify specific risks on your property and mitigate as able, such as clearing culverts and diverting water.
- Have an evacuation route planned that is least likely to be impacted by flash flooding / debris flows.
- Stay alert when storms are forecast.
- Make an emergency plan and disaster kit.



Make a Plan.

Family Disaster Plan - Identify potential hazards, designated meeting places, evacuation routes, and a communication plan with emergency contact numbers, both in and out of the area.

Don't forget to plan for your pets!

Build a Kit.

Disaster Supply Kit – Collect basic household items you would need in an emergency – food, water, medication, and other supplies you would need to last for at least three days. Make sure to consider items that are personally necessary for you that may not be listed.



What should you do **DURING** an event

- Do not leave your location during the storm. Once the storm starts, stay off the road.
- Be alert during storms – don't wait for officials to notify you if dangerous conditions are occurring.
- Continue to monitor communication channels from emergency officials – AlertSLO, social media, WEA, etc.



Roads

- County maintained roads are remote in this area
- Road washouts/closures are possible (for an unknown length of time)
- Plan 2 evacuation routes from your home
- **Never** drive through floodwaters! Turn around, don't drown (6 inches sweeps off feet, 12 inches moves a car)





San Luis Obispo Alerts

Sign Up below to receive alerts from San Luis Obispo County-- a free service for our residents.

Enter your physical address and zip code to receive the alerts that directly impact the area in which you live or work. Notifications are received through text and email. In the event the system is used for protective action orders or warnings, alerts will be delivered to you through priority channels including phone calls and/or priority text messages.

Emergency voice alerts sent from the County will come through with the following CallerID displayed: (833) 419-3463.

These alerts are provided free of charge, however standard text messaging rates and other charges may apply.

Message and data rates may apply. Message frequency varies. Text **HELP** to 38276 for help. Text **STOP** to 38276 to cancel. Our [terms and conditions](#) and [privacy policy](#).

* Required Fields

First Name

Last Name

AlertSLO

When the NWS forecasts a significant rain event, the County will notify residents in the Gifford Debris Flow Area via AlertSLO.

It is **VERY** important that residents in the area sign up for these alerts so that emergency officials can communicate this information directly to them.

AlertSLO

- Go to **AlertSLO.org** to sign up (Please sign up for Reverse 911 when you are there, too!)
- You will be asked questions about yourself, your location and your alerting preferences. Once you save your account, you will receive alerts pushed out by the County Office of Emergency Services.

☒ **Select All Non-Weather Related Alerts** - *Sign up for this alert if you want all types of alerts. Alerts includes: Highway closures, power outages, public health alerts and other important community notices. If you only want specific types of alerts, select from the options below instead.*

Notification Groups

☐ 911 Outages

☐ **Gifford and Madre Fire Burn Scar Information** - *For residents and travelers in the area of the Gifford and Madre Fire burn scar.*

☐ Large Planned Power Outages

☐ Major Highway Closures

☐ Other Important Information

☐ Public Health Alerts

☐ **Select Cities** - *Alerts for individual cities. If you also want alerts for areas other than your registered address, select locations here*

☐ Arroyo Grande, CA - *Select if you want all alerts for the City of Arroyo Grande*

☐ Atascadero, CA - *Select if you want all alerts for the City of Atascadero*

☐ Grover Beach, CA - *Select if you want all alerts for the City of Grover Beach*

☐ Morro Bay, CA - *Select if you want all alerts for the City of Morro Bay*

☐ Pismo Beach, CA - *Select if you want all alerts for the City of Pismo Beach*

Be Aware: Other Alert and Notification Systems

During emergencies, many alert and notification systems are used to send out important information to the public quickly.

For this situation, if a Protective Action is required, other methods would also be used. This could include:

- Wireless Emergency Alerts
- Reverse 911
- NOAA Weather Radio
- Emergency Alert System
- Route Alerting



6:46

Emergency Alert

now



Los Padres National Forest Service has issued new EVACUATION ORDERS due to the Gifford Fire. Orders include LPF-011, LPF-013, and SLC-297 in SLO County. This includes South of Pine Mountain Rd and Garcia Ridge, North of Haystack Canyon, East of Pine Creek. Please leave the area immediately. For more information and a map, visit ReadySLO.org/WEA.

Wireless Emergency Alerts

- Emergency alerts that are sent to all cell phones in a geographic area.
- Not impacted by network congestion and there is no charge.
- 360-character messages, so limited information is provided but will tell you where to get more information in each message.
- Note: This is also how the NWS will notify of flash flood warnings even if no protective actions are ordered.

Reverse 911

- Similar to AlertSLO. You will be asked questions about yourself and your location and then when you save, you will receive alerts from the Sheriff's Department.
- It is important to sign up for both, because they can be used in different ways.

Register here to receive emergency alert notifications from San Luis Obispo County Public Safety Agencies. Emergency alert notifications may include evacuations, shelter-in-place requests, missing persons, and other safety-related notifications. You will receive time-sensitive messages wherever you specify. You may register to receive notifications at your home, mobile and/or business phone numbers, email addresses, and text messages. We recommend that you register to receive notifications on more than one device and via more than one delivery method to increase the likelihood of delivery success. Registration should take no more than 5-10 minutes; simply follow the instructions below and on the following pages.

* = required field

Preferred Language * 

Select Language



First Name *

Last Name *



NOAA Weather Radios

- Emergency alerts are provided to NOAA and are accessible over NOAA weather radios.
- They can be used to alert the public to weather and non-weather-related emergencies
- Great in areas without cell coverage.
- Can be purchased online or in electronics stores.



Emergency Alert System (EAS)

- Broadcast over local television and radio
- During an emergency, local officials could activate the EAS to provide emergency information and actions necessary to the general public over local radio and TV stations

Route Alerting

First responders drive through an area to alert residents they need to take an action.

Not a primary method for all emergencies/settings.





Key Takeaways from Tonight

- Sign up for AlertSLO – we need to be able to communicate with you!
- Identify if your zone is within the Gifford Debris Flow Area so you know if you are impacted. ReadySLO.org/BurnScarStatus
- No Protective Actions unless strictly necessary – if actions ordered, please listen.
- Have a plan! Evaluate your property, identify potential risks and how you can safely leave your property.



QUESTIONS?

805-781-5678

oes@co.slo.ca.us

VISIT [READYSLO.ORG](https://readyslo.org), REGISTER YOUR WIRELESS DEVICE FOR NOTIFICATIONS, AND FOLLOW US ON SOCIAL MEDIA!

